

Grassland Land Owner Annual Meeting  
May 15, 2010

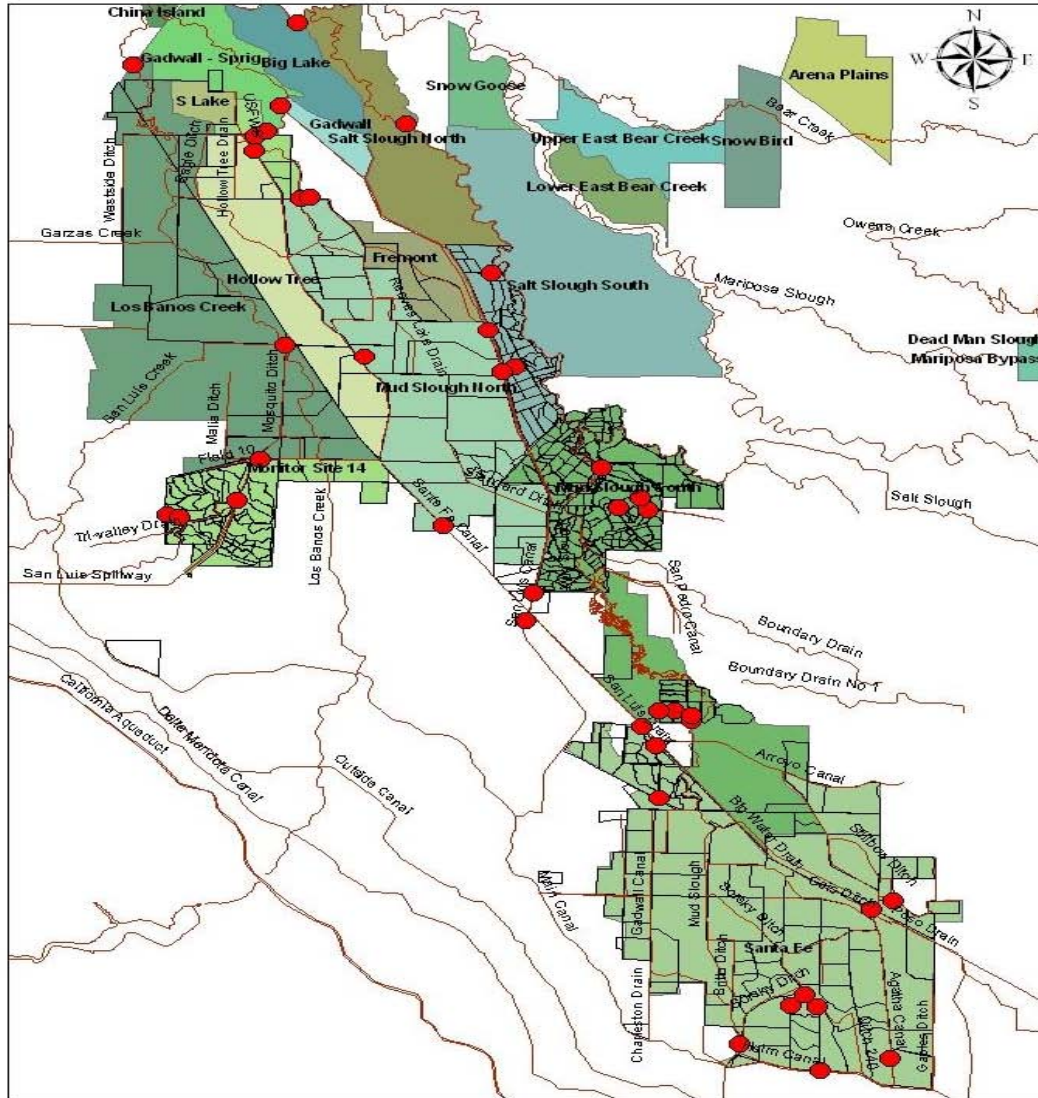
# Flow & Salt Monitoring in the Grassland Water District

Ric Ortega

Water Quality Programs Manager

[rortega@grasslandwetlands.org](mailto:rortega@grasslandwetlands.org)

# Real Time Water Quality Monitoring -USBR-GWD-USFW-CDFG-GRCD-



## 42 Monitoring Station Network

Web Enabled Real Time- 15 Minute

- Temp
- EC
- Flow
- pH

## Private Club (3)

Swamp Timothy Wetland

- Water Balance (F,W,S habitat)
- Water Balance (irrigation)
- Salt Balance

## US Fish & Wildlife (5)

Key Delivery & Drainage Locations

## Grassland Water District (16)

Key Delivery & Drainage Locations

## Cal Dept Fish & Game (18)

Swamp Timothy Wetland

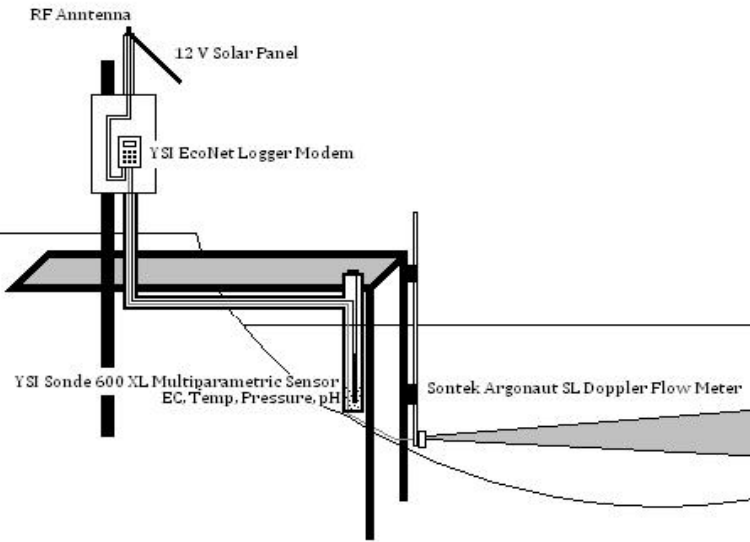
- Water Balances
- Salt balances

Key Delivery & Drainage Locations

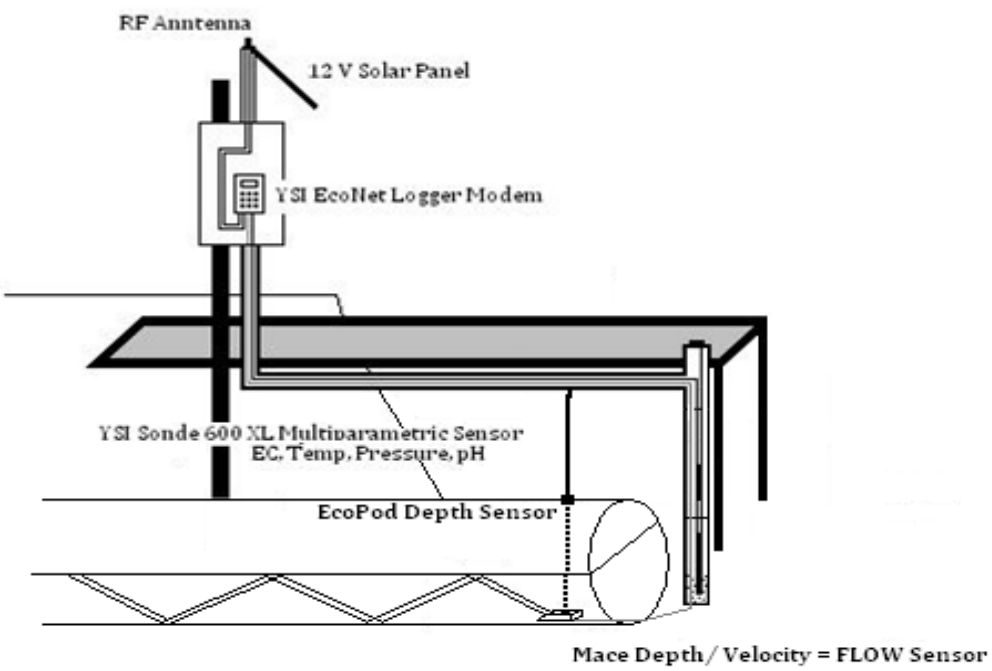
Public Website

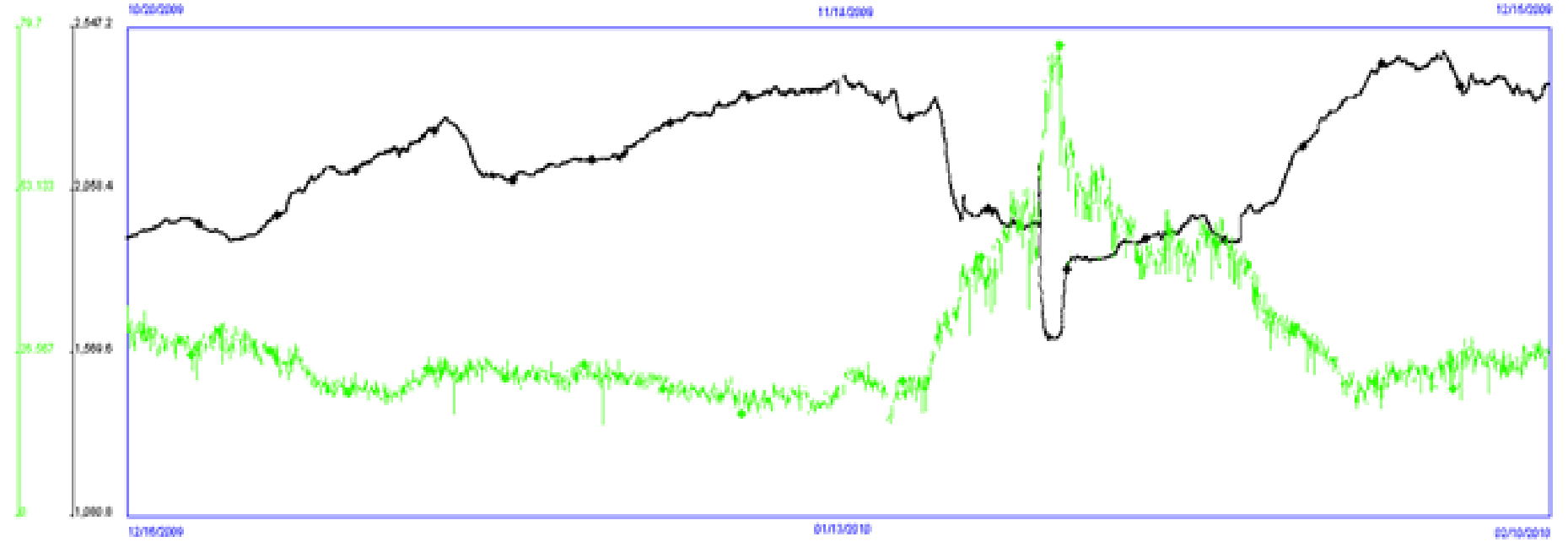
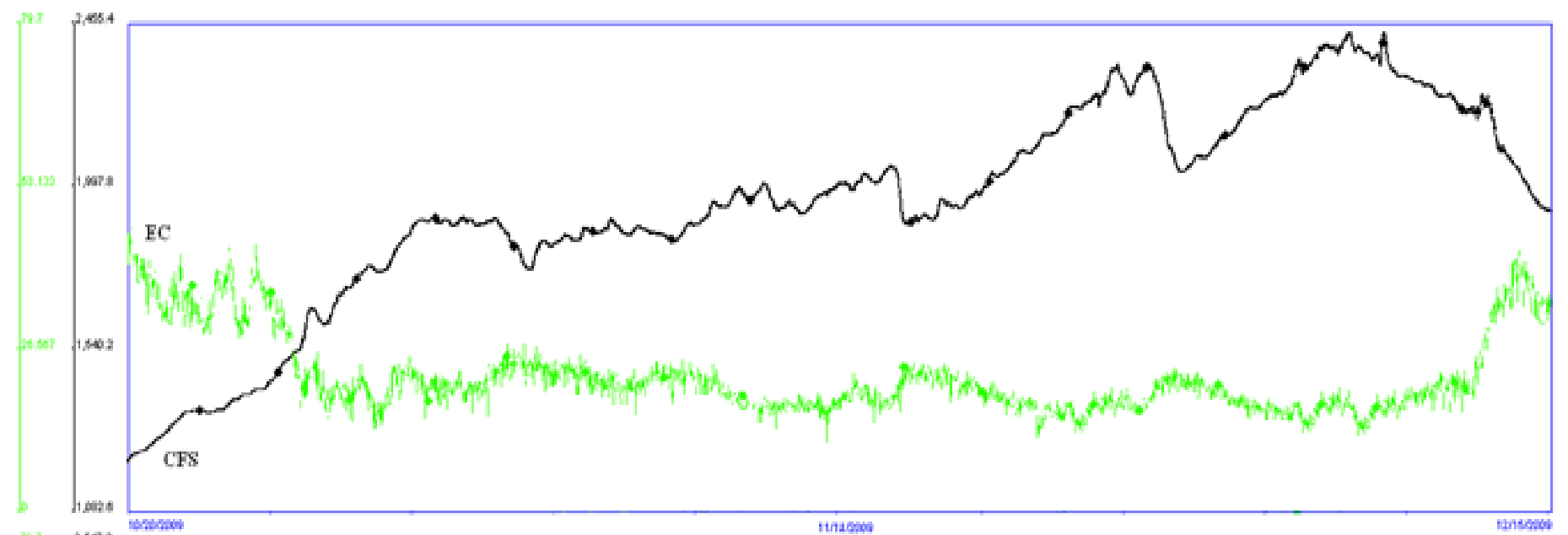
[www.ysi econet.com](http://www.ysi econet.com) → Live EcoNet Sites → Grassland Water District, CA

# Real Time Water Quality Monitoring Station - Open Channel

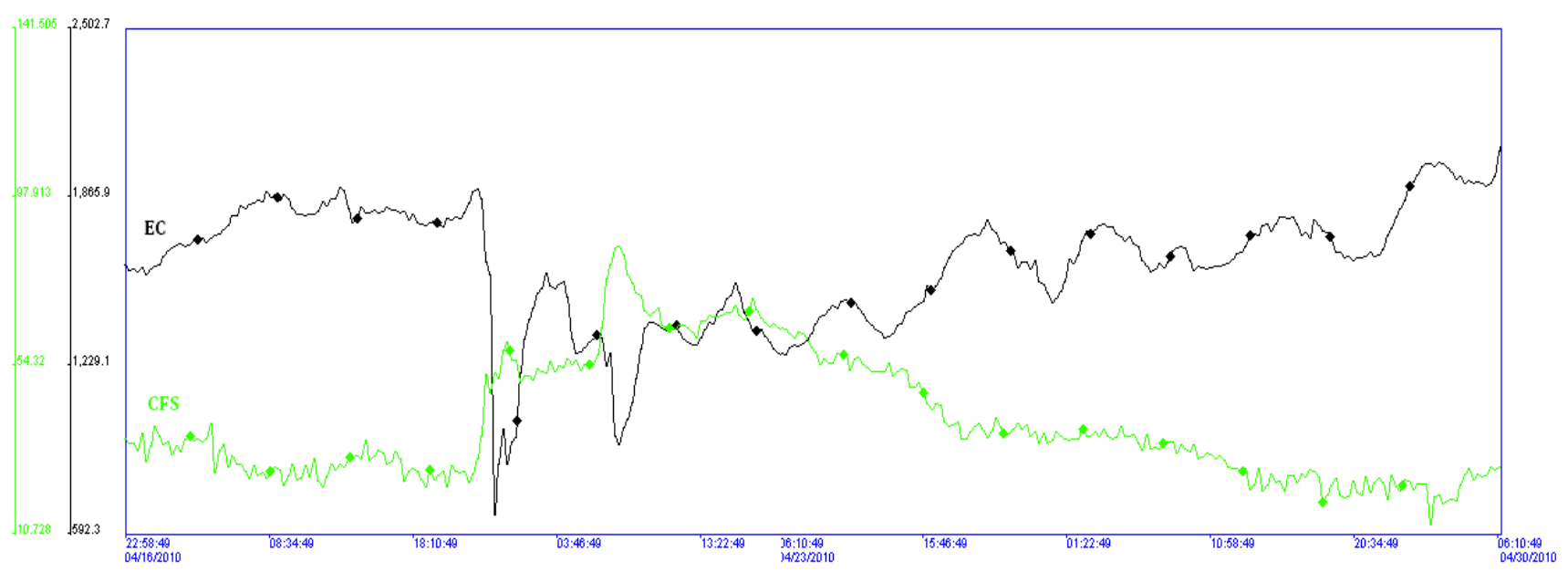
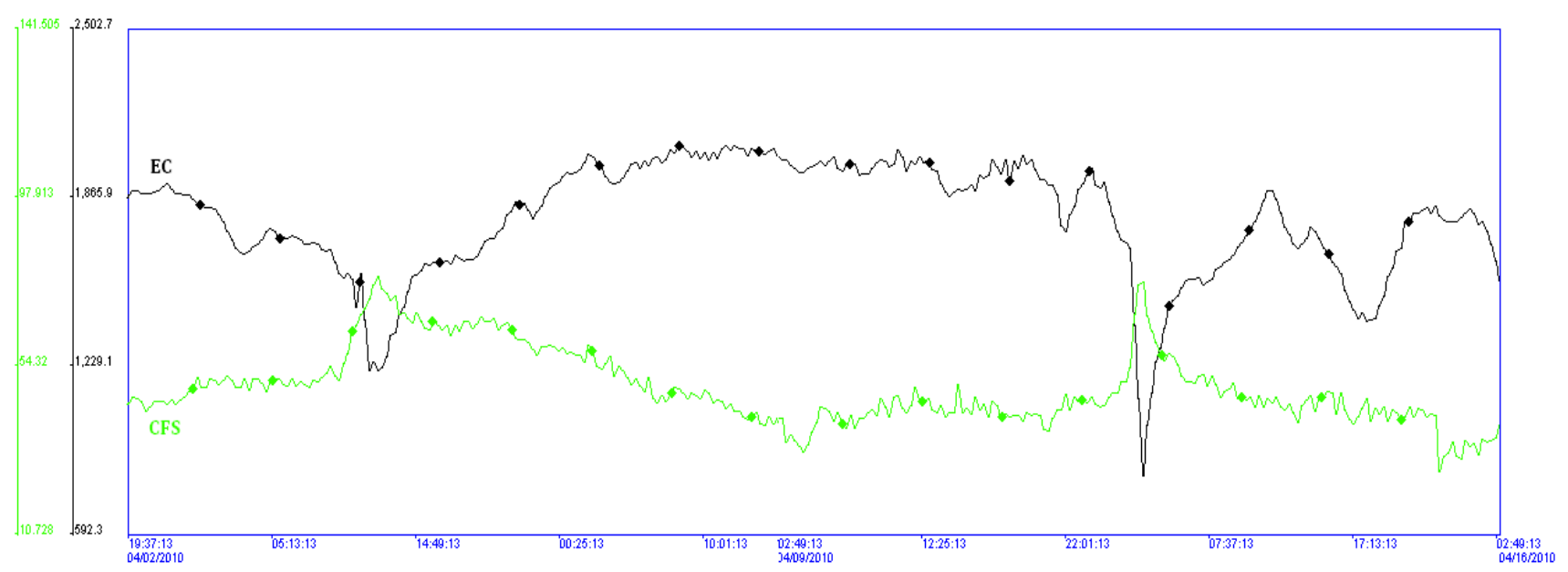


# Weir Monitoring Station





Mud Slough @ Gun Club Road 102009-021010 Flow & EC

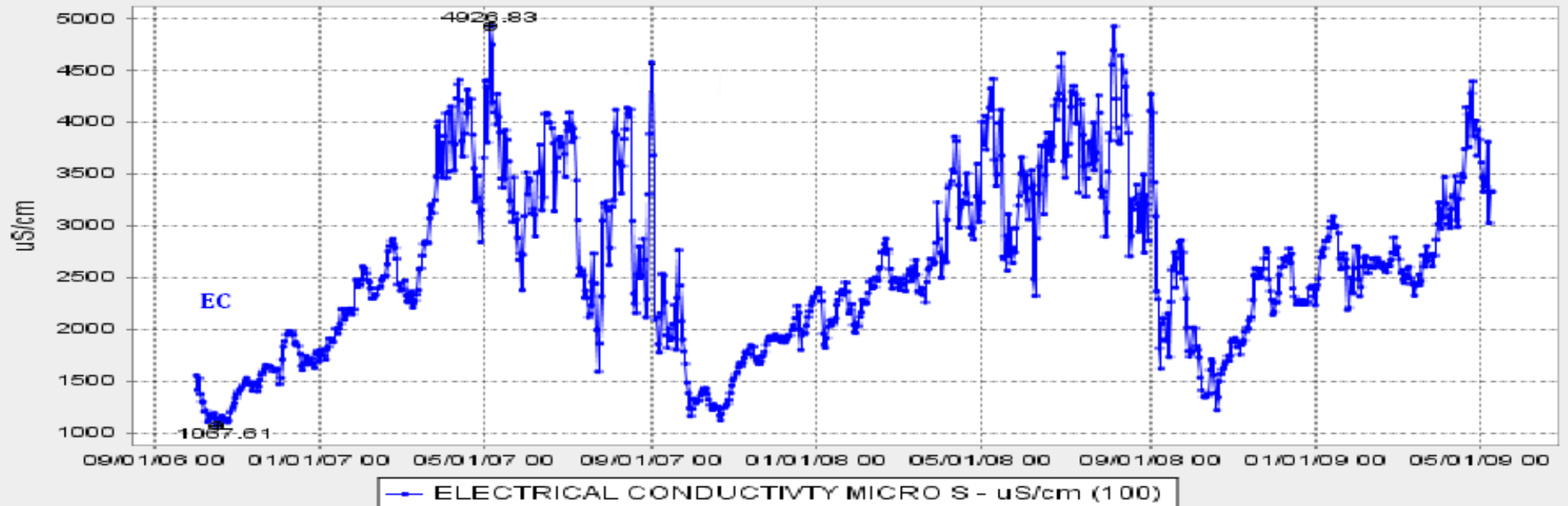


San Luis Canal @ Henry Miller (SL1)

## MUD SLOUGH NR GUSTINE ( MSG )

Date from 10/1/2006 10:08 through 5/10/2009 10:10 Duration : 952 days

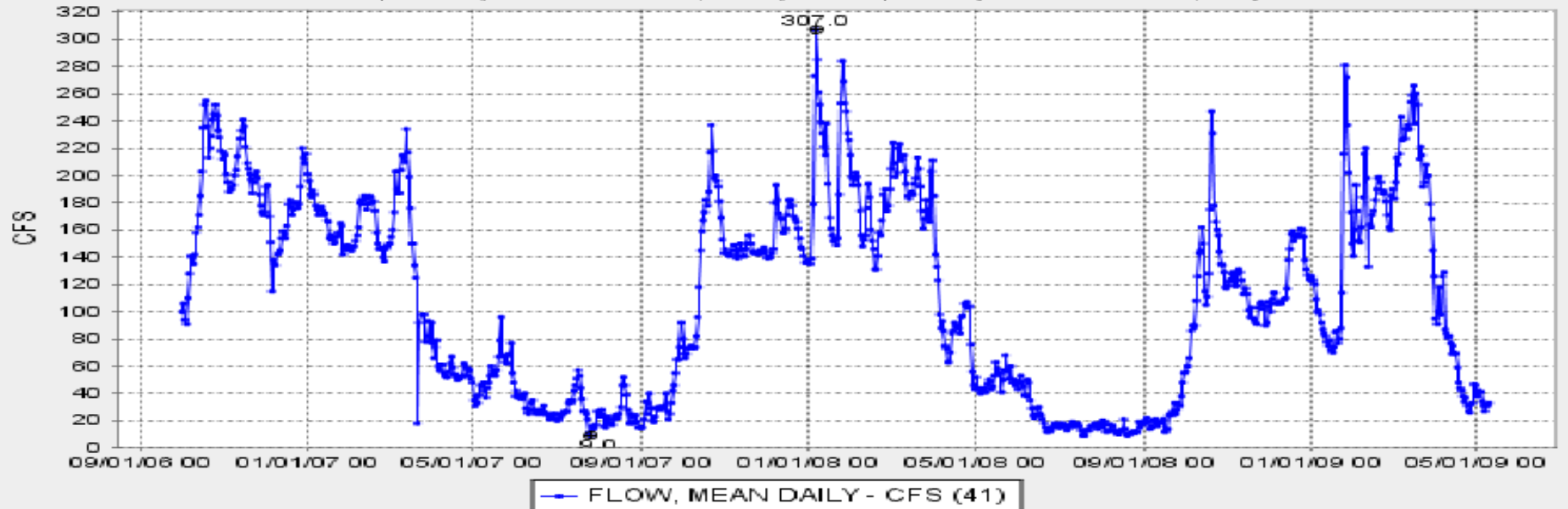
Max of period : (05/06/2007 00:00, 4926.83) Min of period: (10/17/2006 00:00, 1067.61)



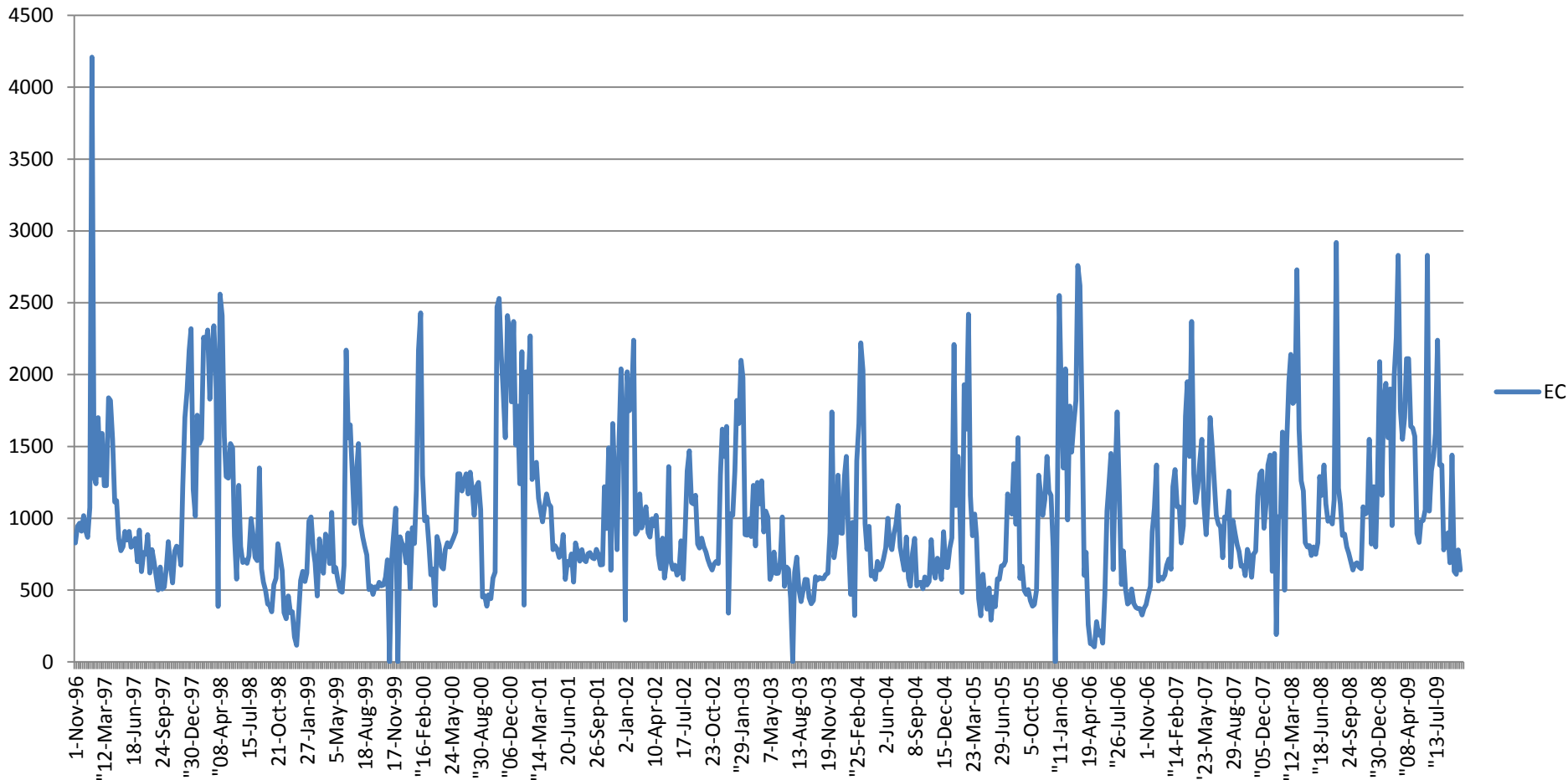
## MUD SLOUGH NR GUSTINE ( MSG )

Date from 10/1/2006 10:08 through 5/10/2009 10:10 Duration : 952 days

Max of period : (01/06/2008 00:00, 307.0) Min of period: (07/26/2007 00:00, 9.0)

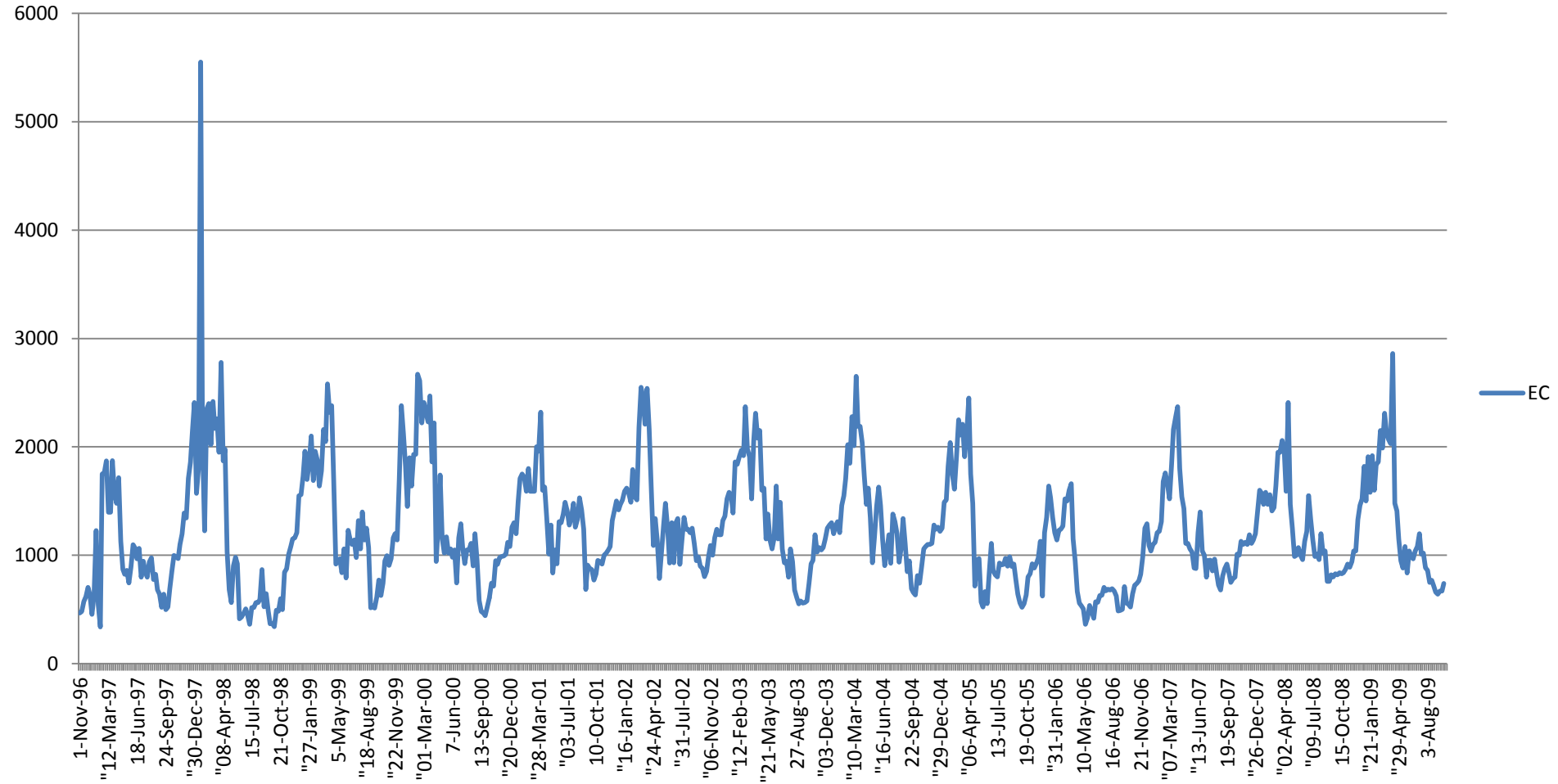


# San Luis Canal @ Henry Miller (SL1) Nov 1996 - Aug 2009





# Santa Fe Canal @ Hwy 165 Nov 1996-August 2009



# Camp 13 Oct 1996 - Jul 2009

