

Grassland Land Owner Annual Meeting

May 14, 2011

Wetland Water Woes

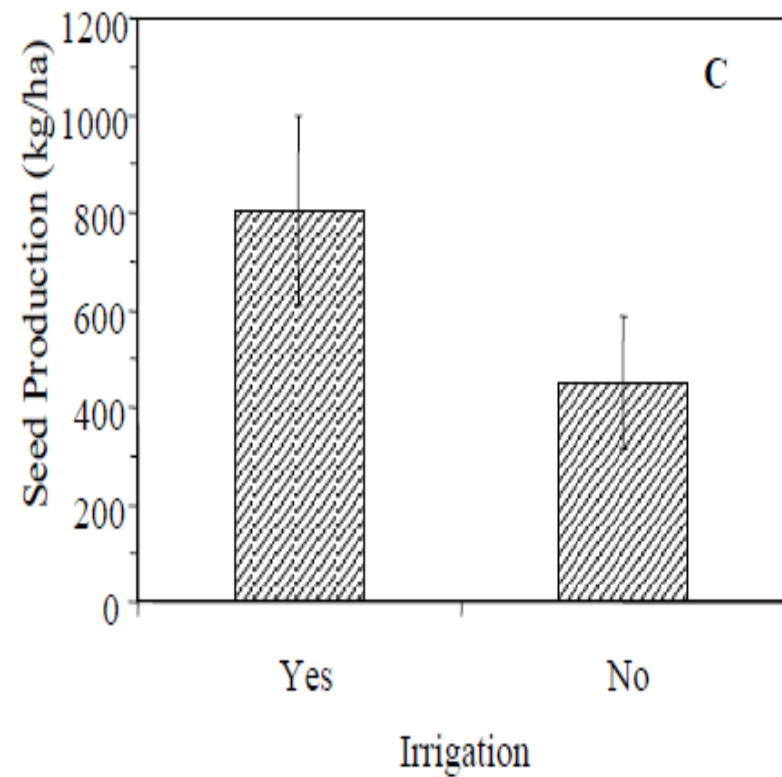
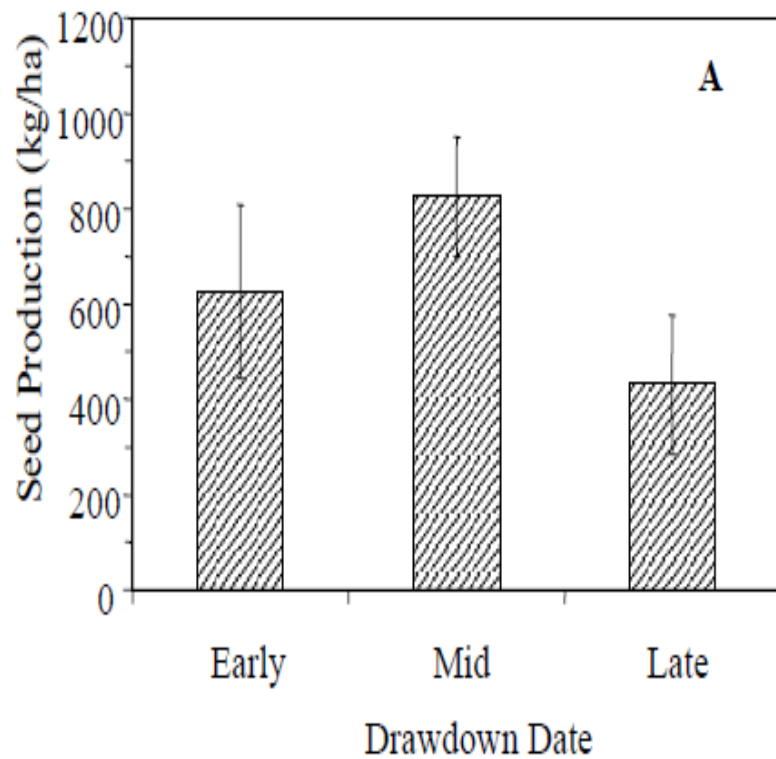
Ric Ortega

Science & Water Quality Programs
Manager

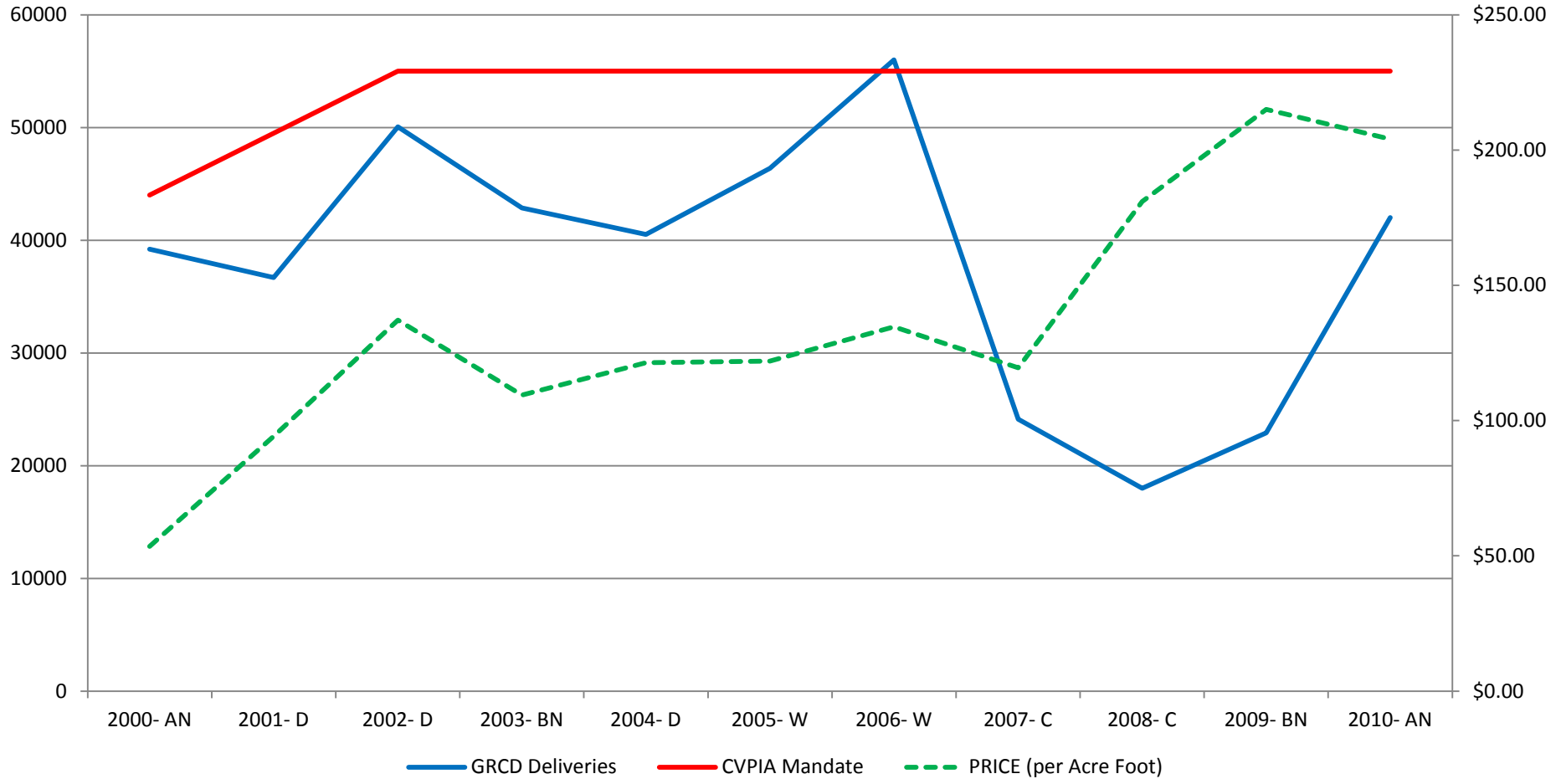
rortega@gwdwater.org

- CVPIA allocated 55,000 af of spring and summer (Level 4) water supply to optimally manage the wetlands of the GRCD.
- Level 4 provides water to...
 - ❖ Maintain ponds to optimal germination timing
 - ❖ Irrigation water to maximize moist soil plant production
 - ❖ Flood and maintain brood pond habitat

Benefits of Level 4 to Wetland Productivity



In the last 4 Water Years (2007-2010) <49% was delivered by BOR to the GRCD!



What is Being Done?

- Groundwater Development Projects currently underway
 - ❖ In 2008 a pumping program was initiated with BOR to generate up to **10,000 af** annually
 - ❖ In 2009 GWD partnered with BOR and the SLDMWA to develop 2 deep wells at Volta WA to generate up to **5,000 af** annually
 - ❖ In 2010 GWD was awarded \$2M in ARRA funds to
 - ✓ Refurbish existing wells
 - ✓ Develop new wells

What else is being done?

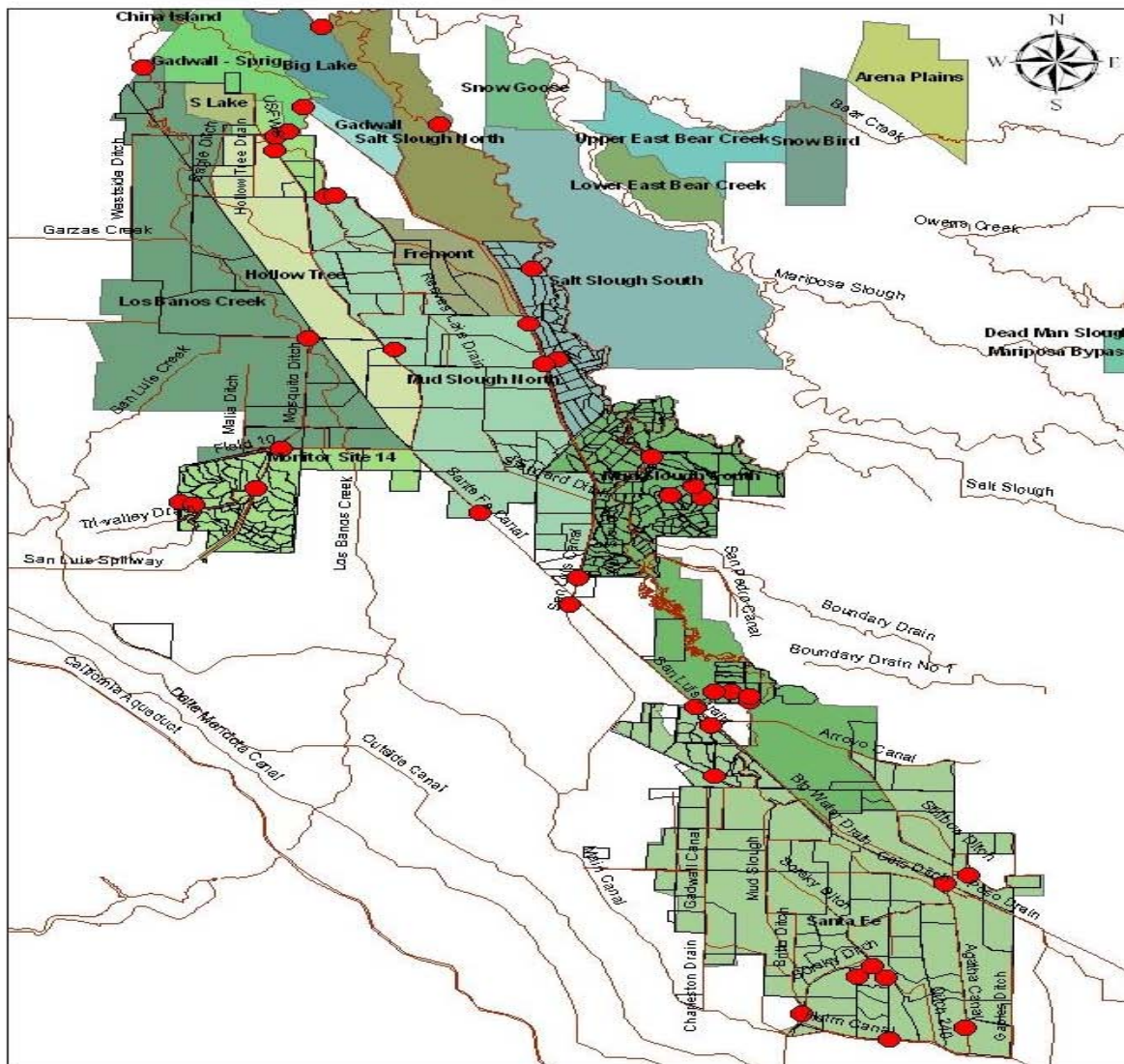
- **Proposed Water Conservation Projects**

- ❖ In 2010 GWD was awarded \$700,000 to conduct a feasibility study and design the NGWCWQCP estimated to recovery from **5,000-16,000** af annually
- ❖ In 2010 WCB purchased 145 acres in the GRCD with the intent of developing a holding reservoir to recovery between **5,000-10,000** af annually

Responsible Development of Water

- Utilization of DATA from the Real-time Water Quality Monitoring Network (RTWQMN) and lab grab samples to assess the feasibility of water conservation projects
- Utilization of the RTWQM to conjunctively utilize surface water with recovered operational spill and or groundwater to insure water conservation is maximized and wetland water quality objectives are met.

Real Time Water Quality Monitoring -USBR-GWD-USFW-CDFG-GRCD-



Public Website

www.ysi econet.com → Live EcoNet Sites → Grassland Water District, CA

Other Uses of RTWQMN

- Water Conservation and Water Quality Optimization Decision Support for wetland and water managers
- Characterization of WQ entering, leaving, and at Key mixing locations throughout the GRCD
- Characterization of Water and Salt Balances in Swamp Timothy Managed Wetland Monitoring
- Development a SWRCB approved Real Time Water Quality Monitoring Network to help meet load allocation objectives to the SJ River

Questions?

Contact Info

Ric Ortega

rortega@gwdwater.org